

WIN-SSHFS for CRESCO

What is SSHFS?

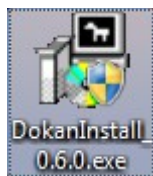
Is a SSH(SFTP) filesystem made using Dokan and SSH.NET library. It allows you to mount remote computers via SFTP protocol like windows network drives.

Quick List of requirements for Windows XP-Vista-7

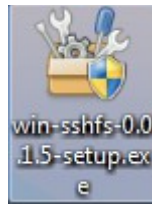
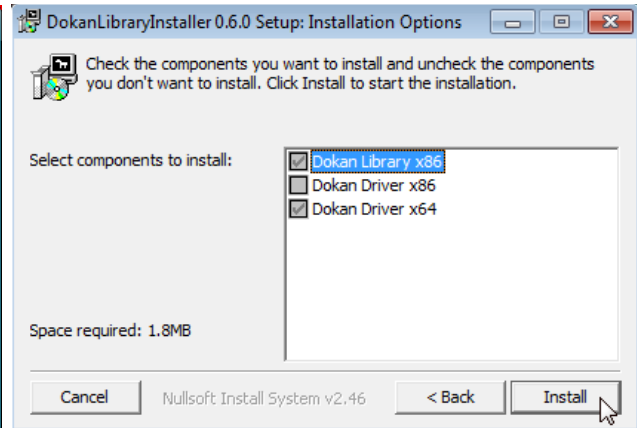
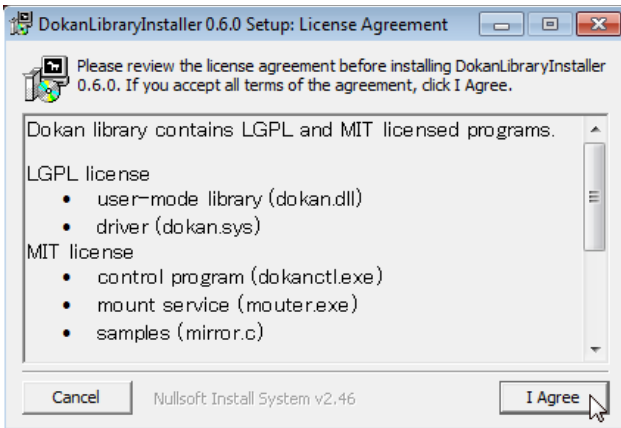
Requirements for Windows	Download from ENEA-GRID site:	Projects official site:
Dokan Library version 0.6.0	DokanInstall_0.6.0.exe	dokan-dev
Microsoft .NET Framework 4 (Pre-bundled with Windows 8+)		.NET framework 4
Win-SSHFS	win-sshfs-0.0.1.5-setup.exe	win-sshfs

Instructions to install requirement and WinSSHFS

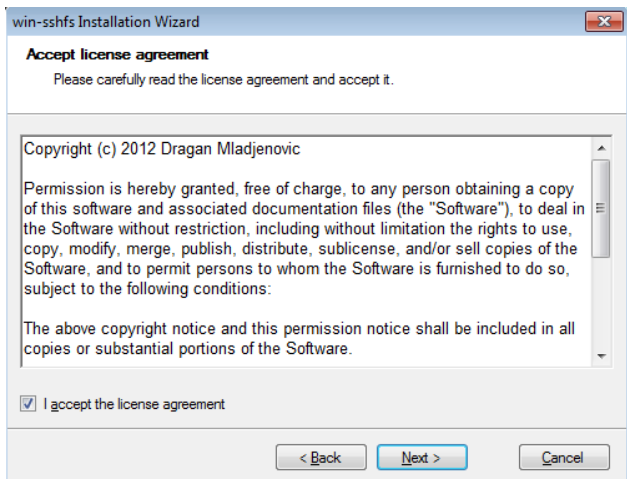
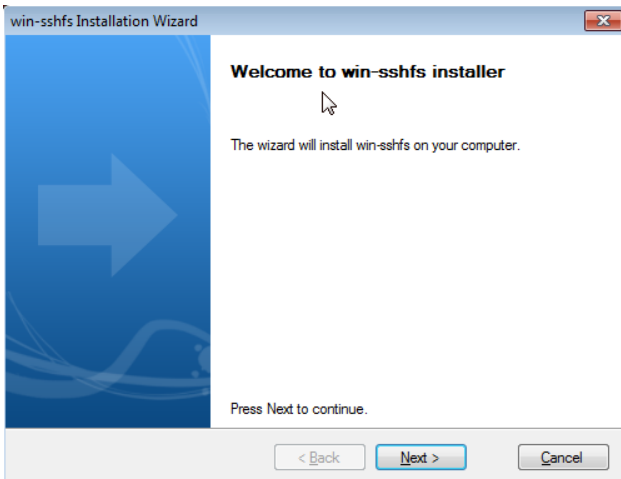
- Install Dokan Library



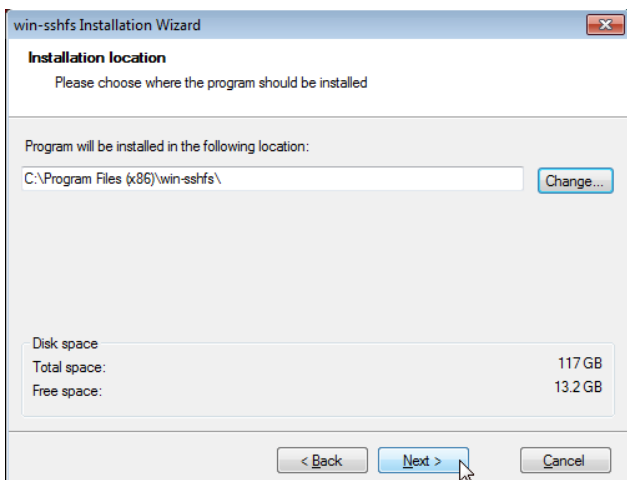
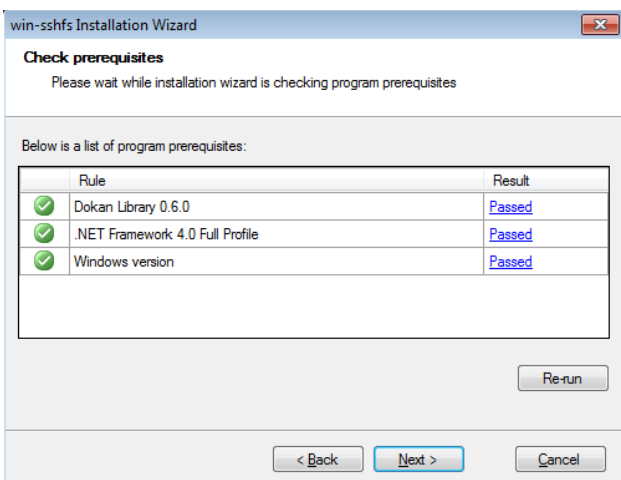
The setup prompts you to install the .NET Framework 4 if not found on your system.

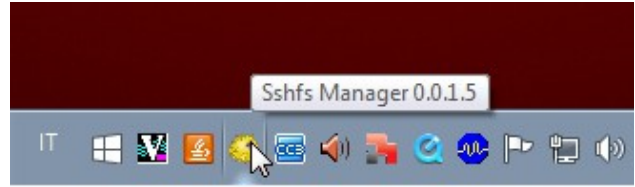
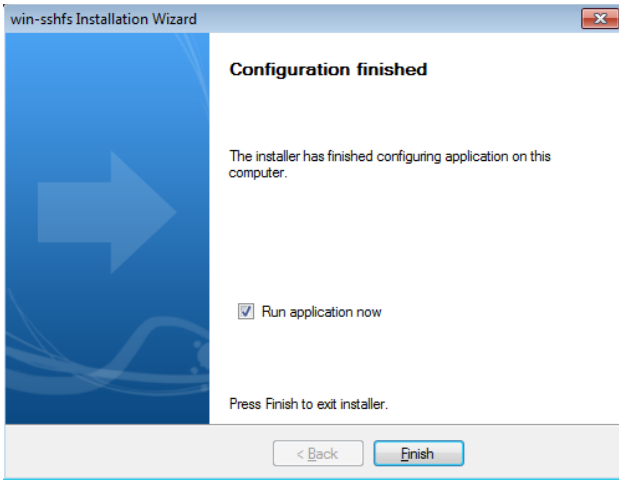


- Install Win-SSHFS



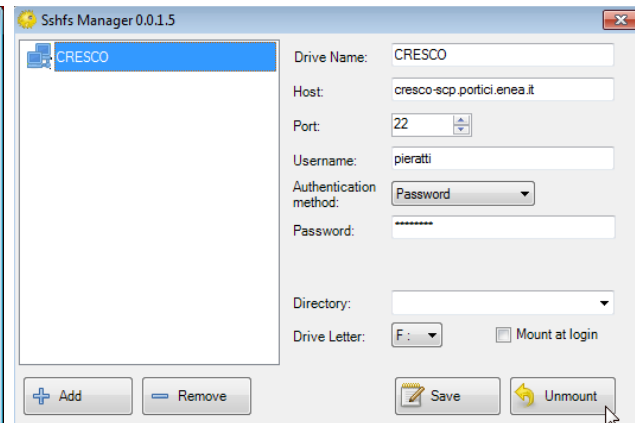
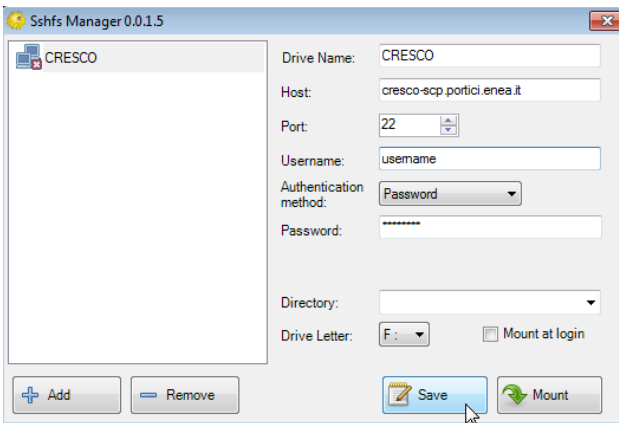
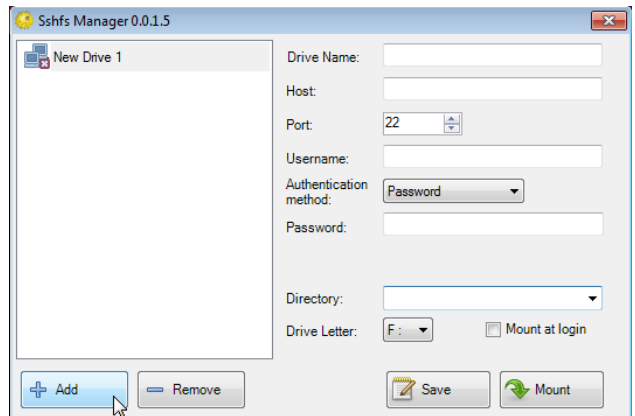
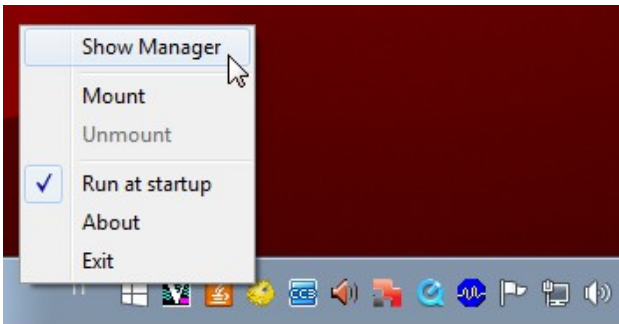
The setup check the prerequisites on your system.





How To Use WIN-SSHFS to Mount Remote File Systems Over SSH for CRESCO

- Show Manager and Add new Drive Name:



Drive Name: CRESCO

Host: cresco-scp.portici.enea.it

Port: 22

Username: your_eneagrid_username

Password: your_eneagrid_password

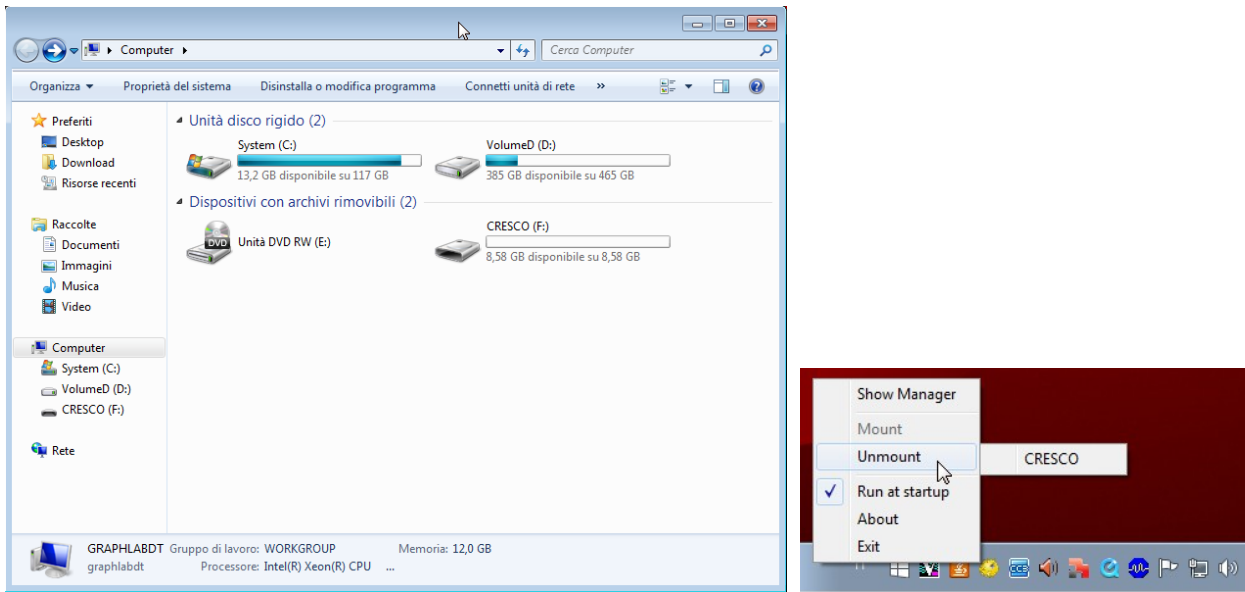
Directory: Empty for your_AFS_HOMEDIR or insert a path, example:

- ➔ Dir in AFS file system: /afs/enea.it/fra/user/your_username/any_dir
- ➔ Dir in GPFS file system: /gporq1_1M/usr/your_username/any_dir

Drive Letter: Mount at "drive letter" on your PC

Save: To save the drive with username and password

- **Drive CRESCO on your PC**



Mount / Unmount to manage remote disks

Other information How To Use SSHFS to Mount Remote File Systems Over SSH

- [Windows / Linux / Mac](#)
- [SSHFS Windows 8](#)